

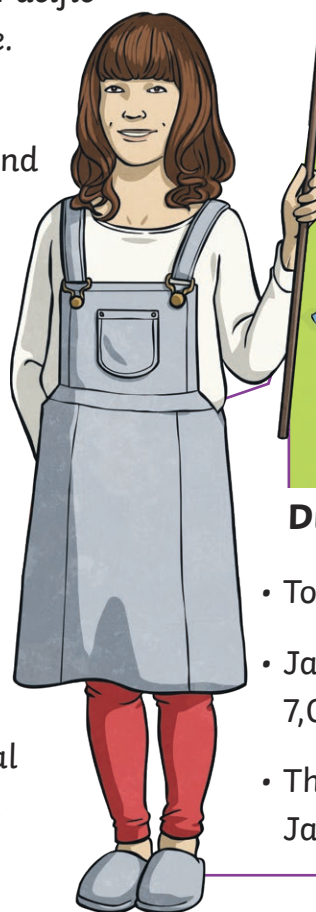
# Japan

Japan is a country made up of many different islands in east Asia, on the edge of the Pacific Ocean. Over 126 million people live there.

## Traditions & Festivals

Japan has many ancient festivals and traditions. For example:

- **Hanami** – In the spring, families and friends have a picnic under the beautiful, flowering cherry trees in parks.
- **Oshogatsu** – To celebrate the New Year, many people swap greetings cards and children traditionally receive money. Then, families travel together to a local shrine and make a wish.
- **Chado/Chanoyu** – This is the traditional Japanese tea ceremony. There are strict rules for how the tea must be made and drunk.



## Did You Know...?

- Tokyo is the capital.
- Japan has nearly 7,000 islands!
- The highest point in Japan is Mount Fuji.

## Japanese Food

Sushi is the most famous of all Japanese foods but there are many more:

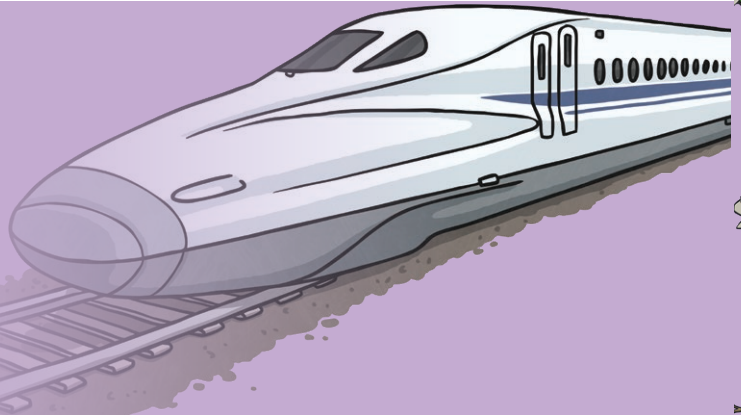
- Tempura is a tasty, fried snack.
- Takoyaki is a snack made from octopus.
- Hot noodle soups, such as ramen and udon, are a favourite fast food.

Rice is a common ingredient in Japanese cuisine and can be eaten for all three meals of the day, including breakfast. Traditionally, people use two chopsticks to eat with and children have simpler versions to practise with.



## Transport

Japan is well-known for having a safe and reliable transportation network. The shinkansen are called 'bullet trains'. They are very fast trains which can reach 200 miles per hour! Japanese car manufacturers are also world-famous for their technology.



## Sport

Many Japanese people are passionate about sport. Many children even come to school at the weekend and during school holidays to practise. They enjoy playing western sports, such as football and baseball. In addition, there are many traditional sports. Sumo wrestling is Japan's national sport. Also, people enjoy practising martial arts. Judo, karate and kendo are popular.

Many tourists will visit Japan over the next few years. In 2019, there is the Rugby World Cup. Also, the 2020 Summer Olympic Games will be held in Tokyo.



# Questions

1. How many people live in Japan? Tick **one**.
  - ☐ 7,000
  - ☐ over 126
  - ☐ over 126 million
  - ☐ many different islands
2. Look at the **Did You Know...?** section. What is the capital of Japan? Tick **one**.
  - ☐ London
  - ☐ Tokyo
  - ☐ Hanami
  - ☐ Chado
3. Look at the **Traditions & Festivals** section. When do children in Japan traditionally receive money? Tick **one**.
  - ☐ during Hanami
  - ☐ during Chado
  - ☐ during Oshogatsu
  - ☐ in the spring
4. Look at the **Japanese Food** section. Which foods are often eaten as **snacks** in Japan? Tick **two**.
  - ☐ tempura
  - ☐ crisps
  - ☐ takoyaki
  - ☐ rice
5. Look at the **Transport** section. Why are Japanese car manufacturers world-famous?  

---
6. Look at the **Sport** section. Find and copy a word which shows that many Japanese people feel strongly about playing sports.  

---
7. Would you like to visit Japan? Give reasons for your answer, using examples from the text.  
Please circle:            Yes    /    No  

---

---